

# INSTRUCTIONS OF USE AND MAINTENANCE OF THE PRESS-CLIPPER MOD. ACP-16



## **INSTRUCTIONS OF THE PRESS-CLIPPER ACP-16**

First of all thank you for your decision to buy a product CLIPPACK, which we are sure is going to be a great help in your manufacturing process.

Using this unit is very simple and does not require any previous experience for a perfect job of sealing products. Anyway, you should read this manual before you start using your new acquisition.

### **METHOD OF USE**

- Place the machine in a flat, firm and balanced surface to work properly.
- Place it in the way that synchronize with the filler to get the maximum efficiency in each movement and consequently increasing the productivity.
- Switch the machine to the air supply (1) and ensure it gives enough pressure for the correct functioning of the unit.

### **OBSERVATION:**

**The main air supply must give a minimum of 6 bars.**

- Adjust the gauge (2) to 5 bars.
- The entrance and the presser pressure can be adjusted with the knobs 2 and 3 respectively, by pulling them up and turning right or left according to the wished value.
- Choose the type of clip to be used and fill the magazine, allowing a space in the top to accommodate the pusher.
- Note that the clips have entered completely and are perfectly positioned and aligned. Check the clips run smoothly along the charger until the login window on the machine.

THIS UNIT CAN BE USED AS, ONLY A CLIPPER OR, AS A PRESS CLIPPER AND THIS CAN BE SELECTED WITH THE SWITCH (4) PLACED ON THE UPPER RIGHT SIDE OF THE HOUSING OF THE MACHINE.

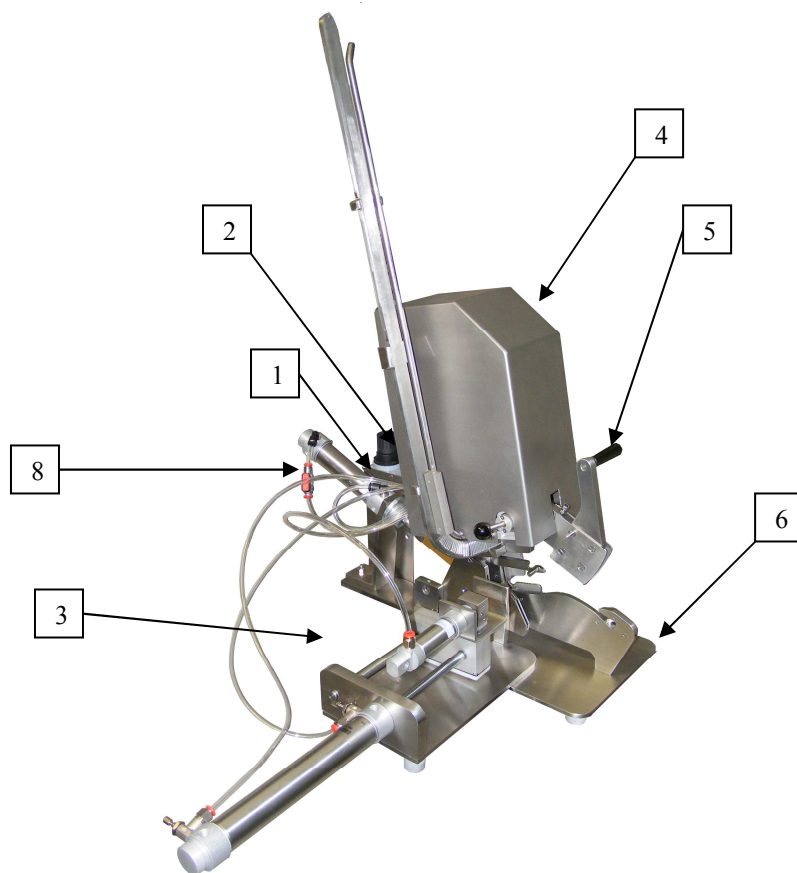


Fig. 1

## CLIPPER FUNCTION

- Select the clipper mode with the switch indicated before.
- In this position the presser will go back and the casing clamp will close for security and will leave space for clipping.
- So now, every time you press down the casing gatherer handle (5) the machine will launch a clipping.
- If you have clipped without casing remember to remove the empty clip before starting a new clipping otherwise this could jam the machine or would not closet he clip.
- **ATTENTION: With this function all the other elements of the machine except the ones of the clipper will leave disabled.**

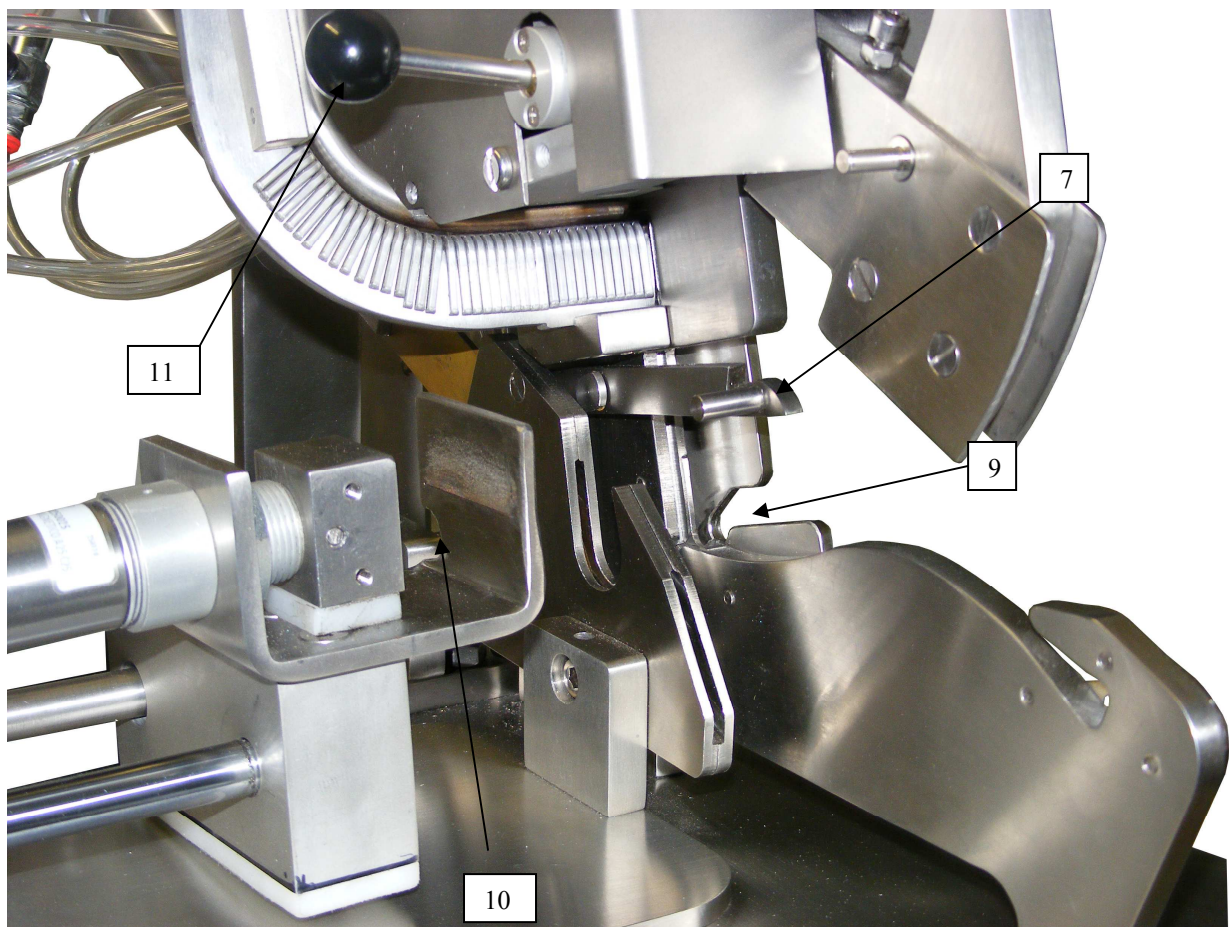


Fig. 2

## PRESS CLIPPER FUNCTION

- Select the press clipper function .
- When filling the loin or the ham or the piece you want to clip leave about 15 cm of empty casing.
- Place the filled casing to the right of the machine.
- Slide the empty casing through the right slot (9 – Fig.2 ), of the clipping area, through the blade slot and finally through the locking clamp (10).

**ATTENTION: Keep out the fingers of the casing clamp before starting the process, as in case of accidental action could cause serious injuries.**

- Once the casing is in the clipping area, press the casing gatherer up to the end. This will be blocked by the hook and automatically the clamp will hold the casing and will start pulling it.
- Remember the pressure of the press can be adjusted at your own discretion with the knob (3).
- Once obtained the required press, push down the valve (11) to clip. Together with this action the machine will actuate the pneumatic blade and will cut the remaining casing.
- Once the clipping has been done all the elements will come back to the original position.
- This operation can be cancelled at any moment by simply unblocking the casing gatherer pushing gently down the hook and realising it.

## BLADE

- The blade can be disabled by the valve connected to the upper intake of the blade cylinder.

## IMPORTANT NOTICE

**Never put the finger or other part of the body in the clipping area or in the cutting area or in the casing clamp area or in the pulling area when the process has been initiated.**

## WARNING

**DO NOT TO PLACE FINGERS IN THE CLIPPING AREA WHEN THE MACHINE IS CONNECTED TO THE AIR SUPPLY AS ACCIDENTAL ACTUATION COULD CAUSE SERIOUS INJURIES.**

## CLEANING AND MAINTENANCE.

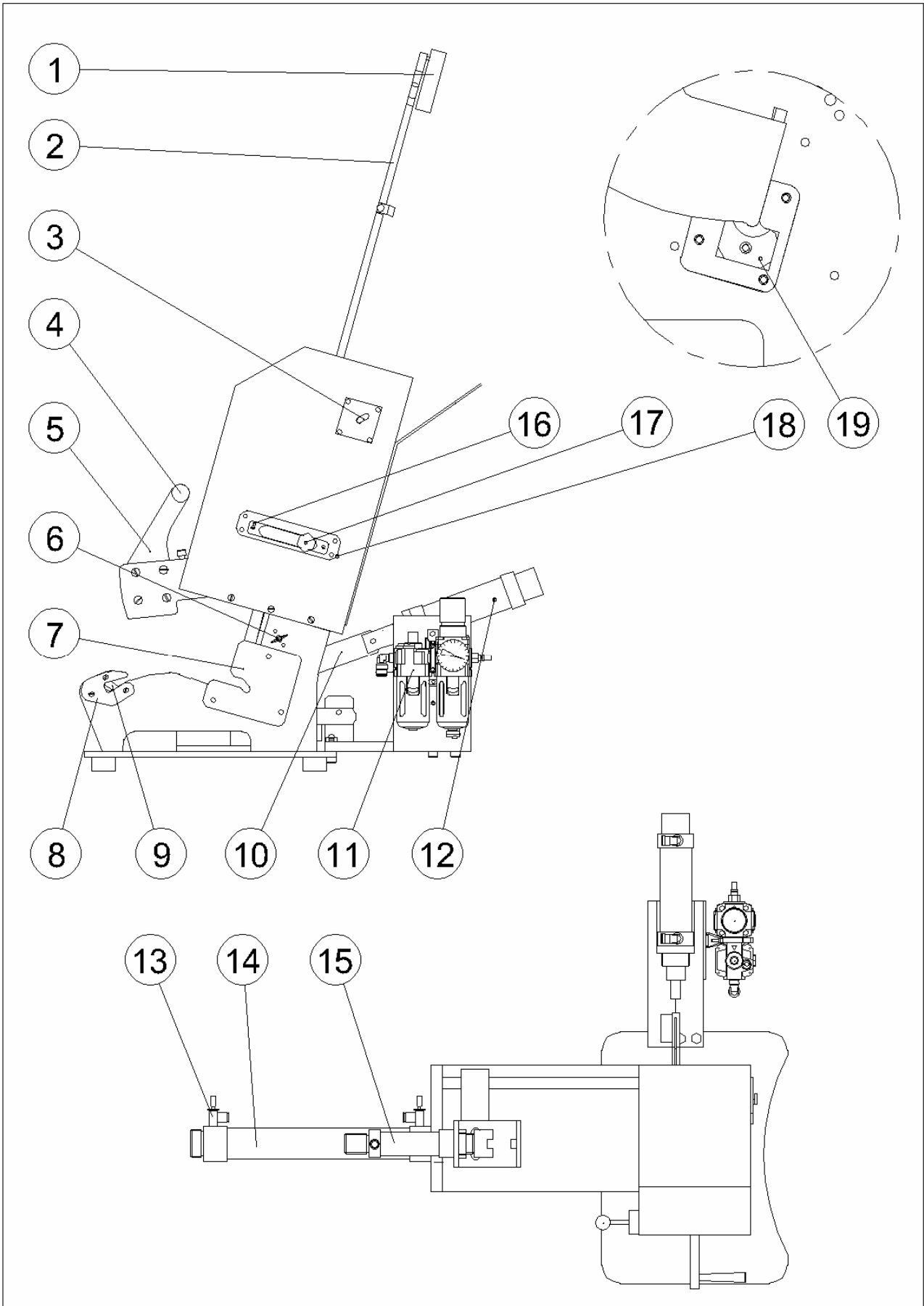
- The cleaning process is quick , simple and economic.
- Unplug the machine from the air supply.
- The machine is made entirely from stainless and can be washed thoroughly using an appropriate detergent. It is advisable to use a brush to clean awkward items.
- For a complete cleaning of the machine you can remove the magazine by simply unscrewing the wingnuts and pulling the complete group to the left.
- When the clipper is clean and dry, place a few drops of oil on the top of the clip canal.

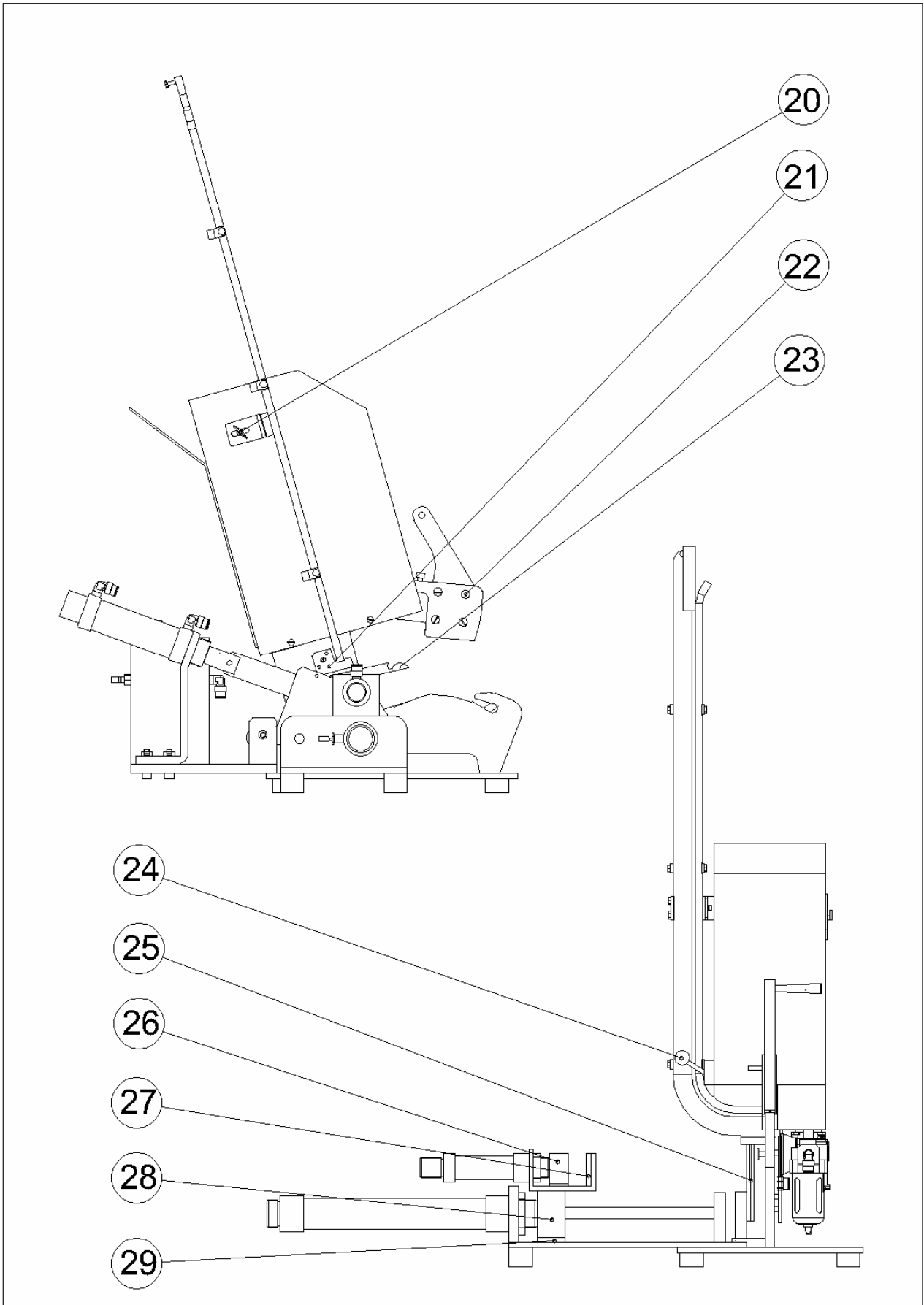
**TROUBLE SHOOTING LIST**

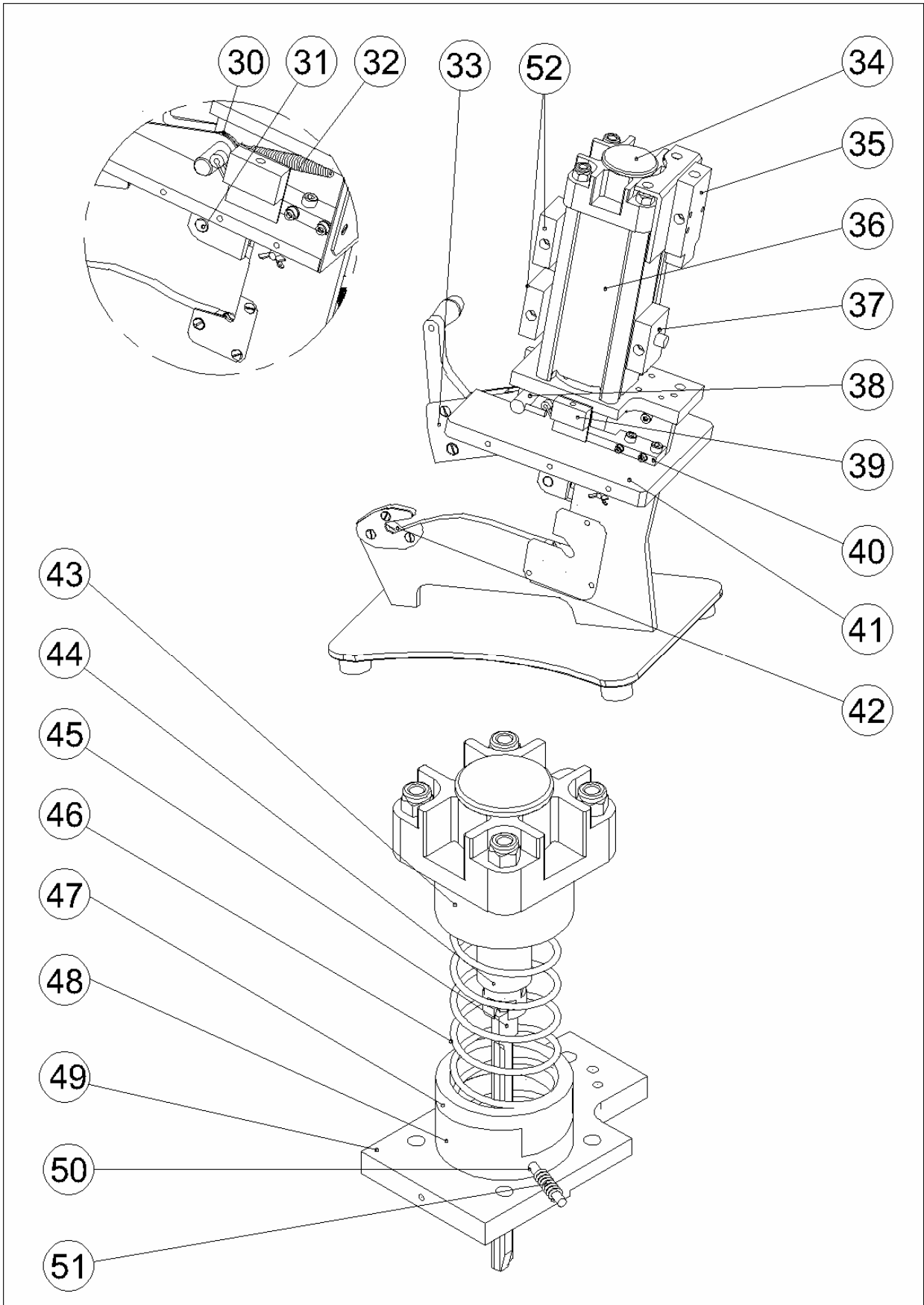
Lower the handle and no clips drop.	<ul style="list-style-type: none"> <li>- Check the clips are the right size and are CLIPPACK originals.</li> <li>- Check that the string of clips is in the correct slot.</li> <li>- Check there is sufficient weight to depress the clips.</li> <li>- Ensure the clip guide is clean and not greasy, and the clips slide down easily.</li> </ul>
Lower the handle and the machine does not work	<ul style="list-style-type: none"> <li>- Check the machine is switched properly to the air supply and verify is switched on and give the right pressure.</li> </ul>
Lower the handle and the clip drops out of position.	<ul style="list-style-type: none"> <li>- Check the clips are the right size and are CLIPPACK originals.</li> <li>- Actuate the handle steadily up to the stop.</li> </ul>
It cuts or nips the casing.	<p>Check the clips are the right size and are CLIPPACK originals.</p> <p>Check the pressure exerted. It is likely too much pressure is being applied.</p> <p>Check you are not trying to close a larger casing than the machine can cope with.</p>
Clip does not close properly.	<p>Check the clips are the right size and are CLIPPACK originals.</p> <p>Ensure the tool is clean and lubricated.</p> <p>If the tool is worn replace it.</p>

**CLIPPACK INDUSTRIES SL. WILL NOT ACCEPT RESPONSIBILITY FOR ANY FAILURE OF THE MACHINE OR THE GUARANTEE PERIOD, UNLESS ORIGINAL CLIPPACK CLIPS ARE USED WITH IT.**

ALL CLIPPACK PRODUCTS ARE GUARANTEED FOR ONE YEAR FROM THE DATE OF PURCHASE AGAINST ALL MECHANICAL FAILURES.









# Lista de piezas clipadora estiradora ACP-16

## Parts list press-clipper ACP-16

Item	Cant.	Referencia/Reference	Descripción/Description
1	1	GC0016	Conjunto contrapeso MC16
2	1	5579MC7	Grupo cargador MC16
3	1	671018	Selector estirador de lomos
4	1	61303/S	Maneta
5	1	4796AC3	Recogedor clip AC-16
6	1	631060516	Tornillo de mariposa tipo americano M5x16
7	1	5186ACP3	Chapa tope tripa
8	1	4569FC5L	Tapa cuchilla
9	1	6N82	Cuchilla
10	1	4942ACD3	Cuchilla tripa
11	1	3231100	Grupo de filtraje
12	1	I3250	Cilindro neumático cuchilla tripa.
13	3	50905	Regulador de caudal.
14	1	I32150	Cilindro neumático principal.
15	1	I2525	Cilindro neumático estirador tripa.
16	4	4799AC3	Embellecedor platina moleteada.
17	2	4768AC3	Marcador limitadora.
18	2	4767AC3	Pletina moleteada.
19	1	5131MC5	Cierre clip 16
20	1	631060516	Tornillo de mariposa tipo americano M5x16
21	1	5099MC3	Sujeción cargador MC16
22	1	6037ACP1	Eje gancho recogedor.
23	1	6051ACP1	Gancho.
24	1	311501	Válvula de palanca 3/2 vías 1/8 mono
25	1	5189ACP3	Conjunto sufrideras cuchilla tripa
26	1	6040ACP1	Apretador tripa
27	1	6041ACP1	Tope apretador tripa
28	2	6043ACP1	Soporte cilindro estirador
29	1	6044ACP1	Base pletina soporte
30	2	5545MC5	Arandela recogedor
31	2	5146MC5	Sufridera recogedor.
32	1	6056ACP1	Muelle recogedor.
33	1+1	4586AC3 / 4587AC3	Protección recogedor izquierda/derecha.
34	1	KXTPG063	Tapa superior cilindro diámetro 63
35	1	310501	Válvula P310 501 3/2 1/8 mono
36	1	4755AC5	Cilindro
37	1	885014	Regulador de flujo 8850 1/4
38	1	6003AC3	Eje recogedor micro
39	1	311301	Válvula de rodillo 3/2 1/8
40	2	5542MC3	Sujeción soporte envolvente
41	1	6004AC3	Soporte envolvente AC-DC
42	2	510501	Válvula 5/2 1/8 mono
43	1	KVPOH063	Kit pisón completo
44	1	4724AC6	Vástago guía pisón
45	1	5560MC7 / 4879MC7	Conjunto pisón clip 12/16
46	1	4781AC3	Muelle
47	1	4743AC5	Regulador inferior
48	1	4744AC5	Regulador presión superior
49	1	4847AC3	Soporte cilindro neumático
50	1	6017DC3	Eje limitadora
51	1	6018DC3	Muelle eje limitadora



**CLIPPACK INDUSTRIES, SL.**

**P.I. Bufalvent**

**C/ Ramón Farguell, 38A Nave 18**

**08243 MANRESA**

**(BARCELONA) – ESPAÑA –**

**Tel/. 93 517 14 68 Fax/. 93 875 72 25**

Website : [www.clippack.com](http://www.clippack.com) E-mail : [clippack@clippack.com](mailto:clippack@clippack.com)